

Leading the way in compassion and discovery.

CORPORATE EVENTS

■ Holiday Celebrations for staff:

Mental Health Services

9 December
11:30 a.m.-1:00 p.m.
Staff Turkey Luncheon

Providence Manor

14 December
2:00 - 4:00 p.m.
Open House Reception

St. Mary's of the Lake Hospital

16 December
2:00 - 4:00 p.m.
Open House Reception



WHAT'S INSIDE

■ Our 150th Anniversary year at a glance:

- Celebration photos
- Sharing our successes



December 13th - Founders' Day!

December 13, 2011:

This date marks the 150th anniversary of the arrival of four Sisters of Providence of St. Vincent de Paul to Kingston in 1861, from Montreal, and their establishment of a community to serve the elderly, the poor and orphaned children at the House of Providence (now Providence Manor). Both our Providence Manor and St. Mary's of the Lake Hospital facilities trace their roots to this historic event. Around the same time Rockwood Asylum was established in Kingston to

serve the mentally ill of southeastern Ontario. Our Mental Health Services facility can trace its roots back to the opening of Rockwood in 1862.

In honour of this date, members of our Senior Leadership Team and Board of Directors will meet and greet our staff as they come to work that day - to show appreciation for our staff's ongoing commitment to upholding our Mission and their valuable contributions to *Enhancing the Quality of Life* of those we care for.



Exterior view, House of Providence
ca. 1890's (photo courtesy of the Sisters of
Providence of St. Vincent de Paul Archives)



Exterior view, Rockwood Asylum
ca. early 1900's (photo on loan to Providence
Care Archives from the Archives of Ontario)

150th Anniversary Celebrations

December 2010-January 2011: **Staff invited to submit ideas** on ways to celebrate 150th Anniversary. Many suggestions put forth by staff were carried out throughout the year.

December 2010-January 2011: **Staff invited to attend planning meeting** to discuss ideas to celebrate our 150th Anniversary and to participate in working groups for various activities.

January 2011: **Gold Providence Care pin provided to all staff** in celebration of 150th anniversary.

January onwards: **Launch of 150th historical blog** by Providence Care Archives Department on Intranet site - updated on a regular basis highlighting our unique documentary history.

8 March: **Flippin' Awesome Pancake Breakfast** - pancake and continental breakfasts provided for staff.



150th Anniversary Celebrations

8 March: **“Guess that Artifact” contest** - historical items on display at Pancake Breakfast events.



26 March: **Historical Photo Display** unveiled at Founders’ Dinner - display on tour at Providence Care sites, Kingston Library, Museum of Health Care and City Hall throughout year.



12 June: **Chillin’ & Grillin’ Staff and Family BBQ** at Lake Ontario Park. Over 900 people enjoyed the festivities. Proceeds from cookie/ dessert sales went to patient/client/resident needs funds.



150th Anniversary Celebrations

27 June: Belleville offices celebrate with pizza picnic.

Our Regional Community Brain Injury Services, Dual Diagnosis Outreach and HPE Geriatric Psychiatry Outreach Teams celebrated at Zwick Park in Belleville.



8 July: Commemorative tree planted in the Haughian Garden at Providence Manor.



July-August: Sharing of historical artifacts and photos

- request went out to staff and the public for old photos, historical artifacts, etc. pertaining to Providence care that they might share.



July-August: Staff invited to submit squares for 150th Anniversary quilt.

Departments, areas, teams, etc. designed and contributed squares to be made into a special commemorative quilt.



150th Anniversary Celebrations

23 September: **Tour of Rockwood Grounds** - part of the *Hearing Our History* Lunch & Learn series.



26 September: **Staff Golf Tournament** - staff celebrated anniversary at annual Staff Golf Tournament.



28 September: **Tour of Printing Museum at Providence Manor** - part of the *Hearing Our History* Lunch & Learn series.



29 September: **History of St. Mary's** - part of the *Hearing Our History* Lunch & Learn series.



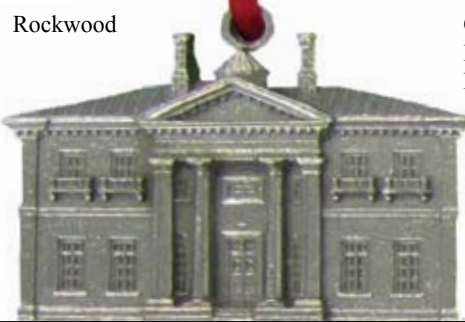
150th Anniversary Celebrations

19-21 October: **Historic Artifacts Display** at each of our main locations -part of the **Hearing Our History** series.

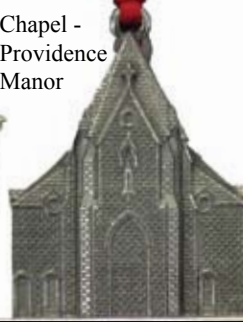


October-November: **Sale of Historical Pewter Ornaments of Rockwood, St. Mary's and Providence Manor** offered to staff.

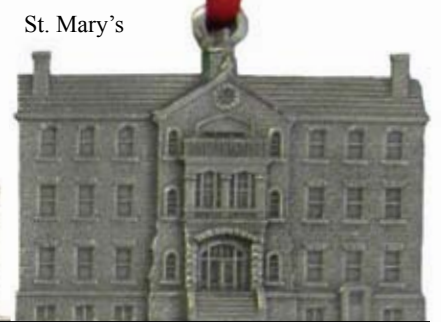
Rockwood



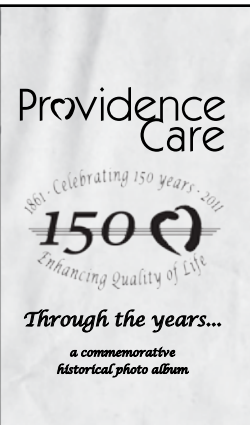
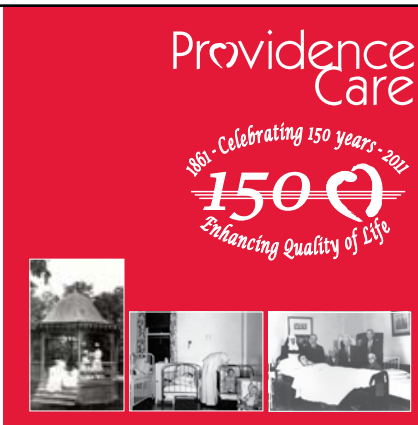
Chapel - Providence Manor



St. Mary's



14 November: **"Through the Years" historical photo album** booklet distributed to all staff via payslips. Cost covered by Shield Printing and other 150th Anniversary sponsors.



23 November: **History of Our Mother of Sorrows Chapel at Providence Manor** - tour of chapel by Sister Catherine Cannon prior to Special Service.



150th Anniversary Celebrations

23 November:

Celebration of the Mission of Providence Care - special service held at Our Mother of Sorrows Chapel at Providence Manor.



23 November: **Gift of commemorative quilt presented to our Founders, the Sisters of Providence of St. Vincent de Paul** at Special Service.



December:

Anniversary quilts unveiled at each of our three main locations.

Commemorative quilts depicting history of site presented and put on display.



150th Anniversary Celebrations

Sharing our Successes



BUILDING...

Providence Care HOSPITAL

Get the latest news at:

<http://providencecareredevelopment.wordpress.com/>

February

- ◆ Providence Care became one of first health service providers in Canada to roll out ePatient Record system across hospital, long-term care and community programs.
- ◆ Providence Manor one of the homes to participate in advanced approaches to strengthening the work environment in long-term care.

March

- ◆ New data on hospital consumer-oriented website (myhospitalcare.ca) showed patients pleased with Providence Care experience.
- ◆ Providence Care celebrated 10-year anniversary of mental health programs.
- ◆ Providence Care celebrated news that Ontario government had approved plans to build our new hospital.

April

- ◆ Providence Care's Community Connections Recovery Program presented *Wings of Spring* art show.
- ◆ Providence Manor scored top marks in province in most categories of resident and family satisfaction survey. The Manor became the new "high performer" in areas including "overall quality of care/services." Families indicated strong confidence in Providence Manor: 90% saying they agreed or strongly agreed that staff put residents' needs first.
- ◆ A poster abstract by St. Mary's Complex Continuing Care Program was accepted for display at the 2011 Nursing Research Council Conference at Queen's University.
- ◆ Providence Care's Amputee Rehab Team presented at Ontario Association for Amputee Care Conference in Hamilton.

May

- ◆ St. Mary's Rehab Team, *Rehab Renegades*, raised \$2,100 at Big Bike for Heart & Stroke.

June

- ◆ VOCEC (Voices, Opportunities and Choices Employment Club, which is supported by Providence Care) Hope and Discovery Artisans were guest artists at Kingston Art Show, *Art in the City*.
- ◆ Providence Care Staff Campaign co-chairs, Chandra Davies and Tanya McDonald, win University Hospitals Kingston Foundation's 2011 Ian Wilson Award for Volunteerism.

July

- ◆ Providence Care partnered with Kingston community by hosting an on-site weekly Farmers' Market in St. Mary's lobby, raising money for the Patients' Needs Fund.

August

- ◆ St. Mary's Spiritual Care Associate, Robert Mundle, had article published in *Journal of Religion, Disability & Health 2011: 15 (3)*.
- ◆ Providence Care's Regional Community Brain Injury Services raised \$1,000 in the Brockville Big Bike for Heart & Stroke.

September

- ◆ St. Mary's Complex Continuing Care (CCC) program held 6th Annual CCC BBQ for patients, their families and staff.
- ◆ In-patient Rehab Team at St. Mary's scored 100% for "Overall Quality of Care and Services" in a provincial survey of patients and families.
- ◆ Providence Care United Way Staff Campaign surpassed goal by raising over \$57,000.
- ◆ Providence Care's Falls Prevention Program received recognition at RL Solutions International Conference.
- ◆ Mental Health Services raised over \$400 at their Alzheimer's Coffee Break event.

■ Phase 2 Environmental Impact Assessment work continues on the grounds of Mental Health Services. The work involves drilling throughout the area, as subsurface investigation of soil, rock and groundwater. This is to determine if there is any existing contamination that needs to be cleaned up. It will also provide information about the strength of the soil and rock, which will help the structural engineers in designing the foundations of our new hospital.

PROVIDENCE CARE HOSPITAL:

Bringing together the programs and services of St. Mary's of the Lake Hospital and Mental Health Services in one new hospital located at 752 King Street West in Kingston.

WORDS OF APPRECIATION



- From a client of Mental Health Services:
"You are all so wonderful and caring."
- From a family member of a resident of Providence Manor to Spiritual Care:
"Thank you for your care and attention to our Mother, and for your thoughtful and well chosen words to us during her final days. It was a difficult time, made easier by yours and the rest of the teams' empathetic care."
- From a family member of a patient of St. Mary's Rehab program:
"I would like to take this opportunity to say a big THANK YOU to Providence Care for true professionalism."