

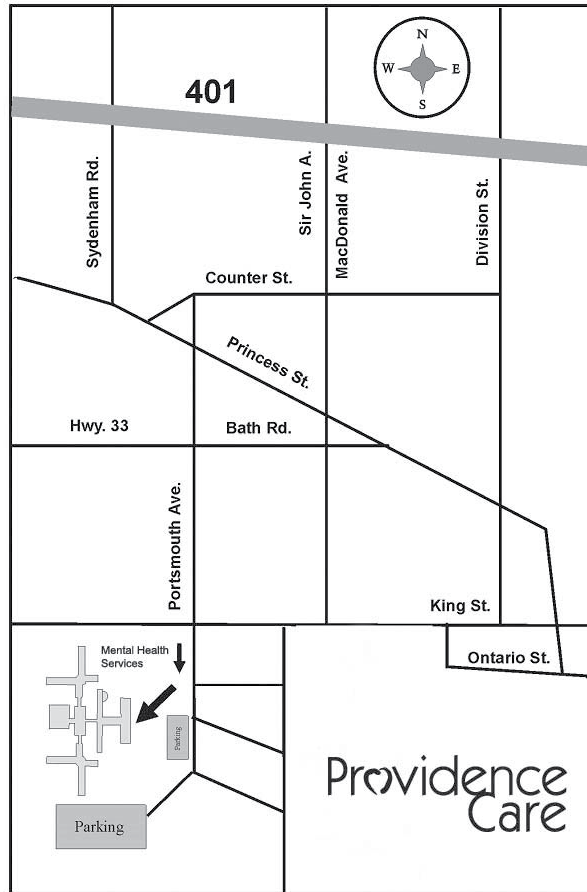
Contact

Providence Care
Mental Health Services
Rehabilitation Management Services
752 King Street West
Kingston, ON
K7L 4X3

Tel: 613-548-2327

Fax: 613-548-6110

Rehabilitation Management Services is supported by the South East Local Health Integration Network.



DIRECTIONS

From 401

Exit at Sir John A. MacDonald Blvd. (Exit #615) Follow Sir John A. for 5.5 km until it ends at King Street. Turn right. Turn left at lights at Portsmouth Ave. Follow road straight down to parking lots on your left in front of main entrance.

Providence
Care

www.providencecare.ca

April 2011

Rehabilitation Management Services



*Since 1968,
assisting clients in their
communities to establish
skills for success.*

Providence
Care

“Determine that the thing can and shall be done, and then we shall find the way.”

- Abraham Lincoln

Rehabilitation Management Services

Who are we?

We are a team of professionals offering community based care for individuals with disabilities.

Our team members have expertise in:

- ◆ musculoskeletal injuries
- ◆ neurological disorders including spinal cord injuries
- ◆ acquired brain injuries
- ◆ stroke rehabilitation
- ◆ amputations
- ◆ pain disorders
- ◆ mental health disorders

Our services are aimed at facilitating return to work, restoring capacity in activities of daily living and promoting health and independence.

This program also works in partnership with multidisciplinary professionals to include Physiatry, Psychiatry, Psychology, Social Work and Nursing.

We strive to exceed the goals of clients with a professional, holistic approach.

Our Services

- ◆ Occupational Therapy
- ◆ Physiotherapy
- ◆ Speech Language Pathology
- ◆ Disability Case Management
- ◆ Functional Capacity Evaluations
Physical/Cognitive Demands Analysis
- ◆ Work Site Assessment
- ◆ Ergonomic Assessment
- ◆ Home Assessment
- ◆ Attendant Care Needs Assessment
- ◆ Discharge Planning
- ◆ Vocational Assessment
- ◆ Psycho-vocational Assessment
- ◆ Transferable Skill Analysis
- ◆ Labour Market Analysis
- ◆ Work Trials/Placements
- ◆ Return to Work Planning and Coordination
- ◆ Job Coaching/Rehabilitation Assistance
- ◆ Vocational Counselling
- ◆ Loss of Earnings Capacity Assessment

Eligibility

The above specialized **fee-for-services** require funding through WSIB, auto insurance, disability insurance, employers and other agencies.

Our Team Members:

- ◆ Disability Case Managers
- ◆ Occupational Therapists
- ◆ Physiotherapists
- ◆ Speech Language Pathologists
- ◆ Vocational Rehabilitation Counselors
- ◆ Rehabilitation Assistants (Occupational Therapy Assistants and Physiotherapy Assistants)

For referral information and/or fee schedules, please call:

Tel: 613-548-2327 ext. 0

Fax: 613-548-6110